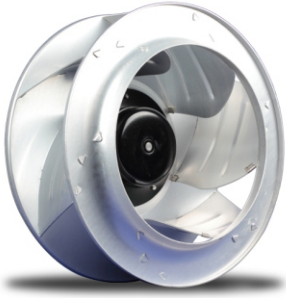


DC Centrifugal Fans

Backward Curved, $\Phi 310$

DC后向离心风机



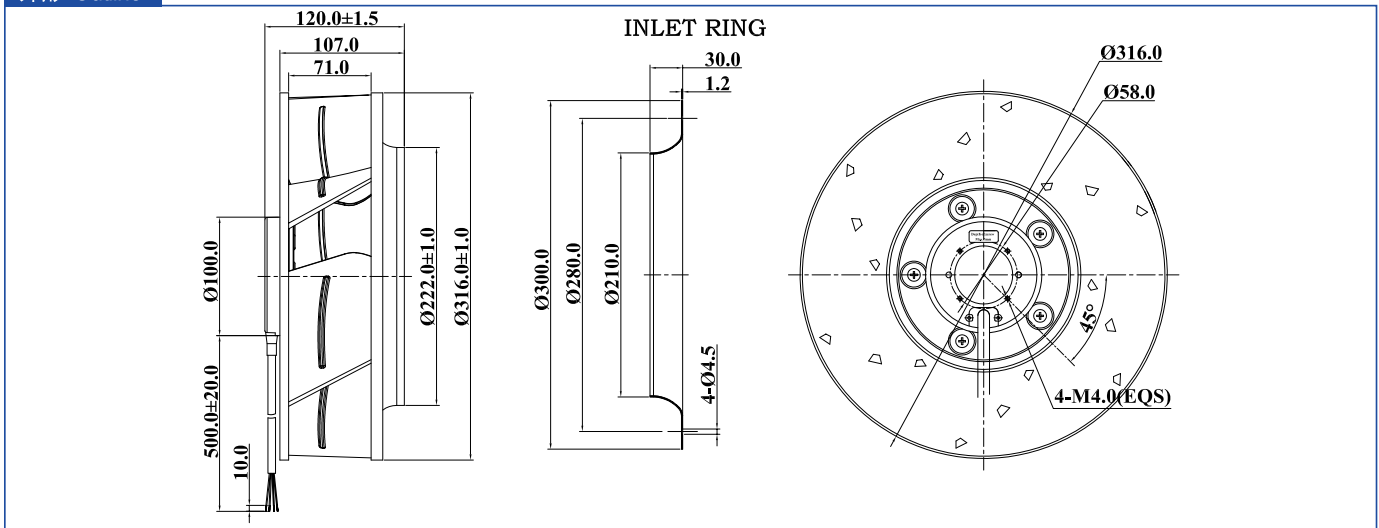
Impeller: Metal aluminum sheet
Motor: DC brushless external rotor motor
Insulation: Class B
Approvals: CE;UL E306337
Operating Temperature: -20~+60°C

叶轮材质: 金属铝合金
 电机类型: DC无刷外转子电机
 绝缘等级: Class B
 产品符合的认证: CE;UL E306337
 工作温度: -20~+60°C

技术参数 Specifications

Listed Model 产品型号	Rated Voltage	Operating Voltage	Rated Current	Rated Power	Rated Speed	Air Flow		Air Pressure		Noise Level	Net Weight
	额定电压	工作电压	额定电流	额定功率	额定转速	风量	量	风压	压	噪音	重量
Part NO.	VDC	VDC	A	W	RPM	CFM	m ³ /h	mmH ₂ O	inH ₂ O	dBA	Kg
PI24310108MB2M	24	16~28	5	120.0	1,600	1044.3	1774	45.48	1.79	64	2.63
PI48310108MB2M	48	36~56	2.5	120.0	1,600	1044.3	1774	45.48	1.79	64	2.63

外形 Outline



曲线 Curves

